

# Introduction to 4GL Development Environment

Part : 3

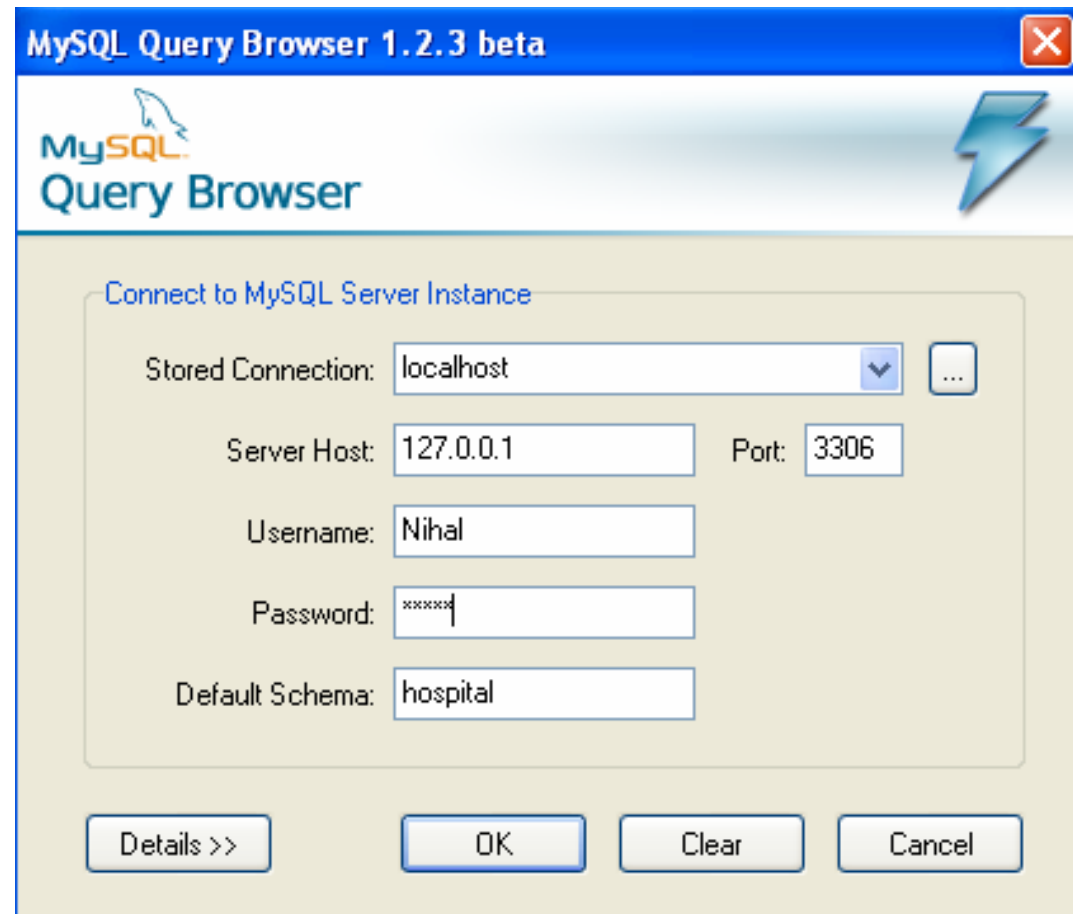
Duration : 06hrs

# MYSQL Query Browser

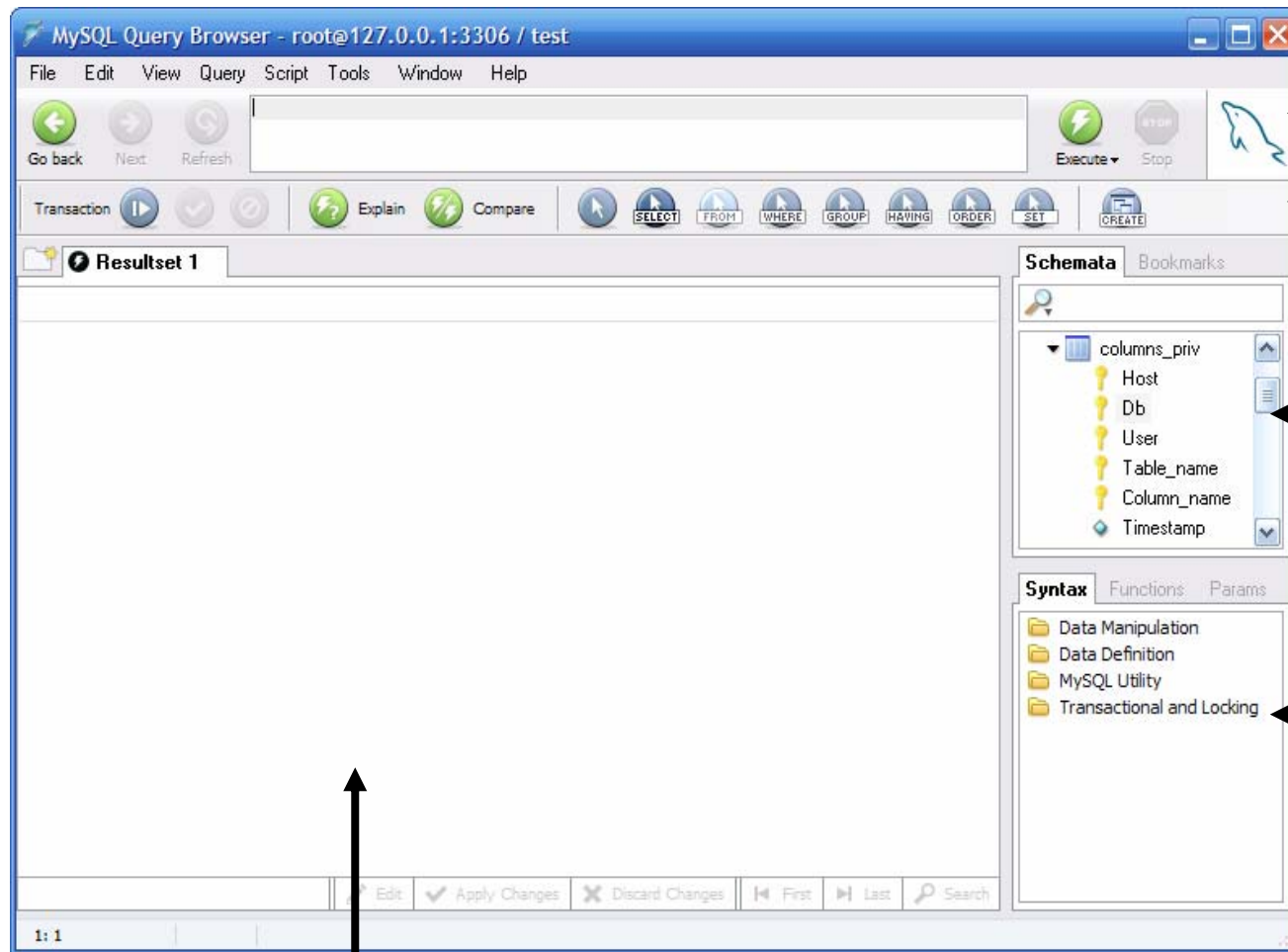
- After Creating Users using the SQL Administrator open the MYSQL Query Browser to query and analyze data stored within your MySQL database.
- To Open MYSQL Query Browser follow the following path.
  - *Start>>All Programs>>MYSQL>>MYSQL Query Browser*
- The MySQL Query Browser is a graphical tool provided by MySQL AB for creating, executing, and optimizing queries in a graphical environment.
- While all queries executed in the MySQL Query Browser can also be run from the command-line using the **mysql** utility, the MySQL Query Browser allows for the querying and editing of data in a more intuitive, graphical manner.

- **Connection Dialog**

- Once MySQL Query Browser has been started, it displays a connection dialog window.



- Once you successfully connect to a MySQL server you are presented with the main query window of the MySQL Query Browser.



← Query Tool bar

← Advanced Tool bar

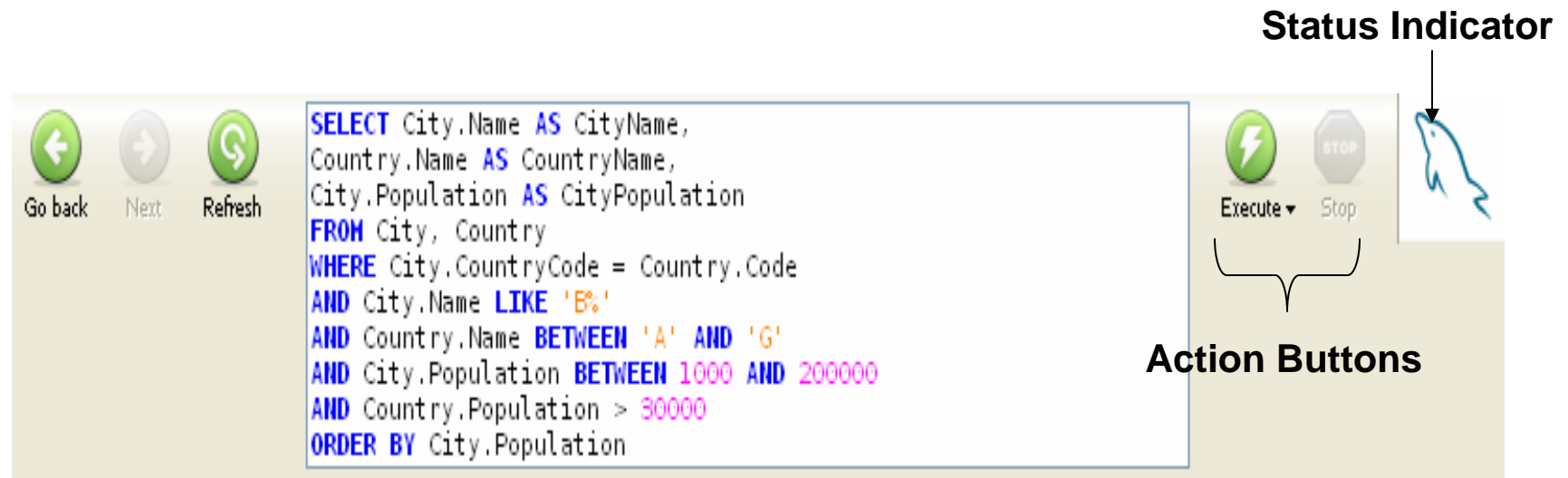
← Object Browser

← Information Browser

Result area


- **MySQL Query Area**

- where the text of all queries and statements are displayed.
- Maximize the query area - Press the **F11** key or Choose Maximize Query Area from the View menu.
- Restore the query area - Press the **F11** key again.




# MS Access - Forms

**Categories**

Category Name:  Picture: 

Description: Sweet and savory sauces, relishes, spreads, and seasonings

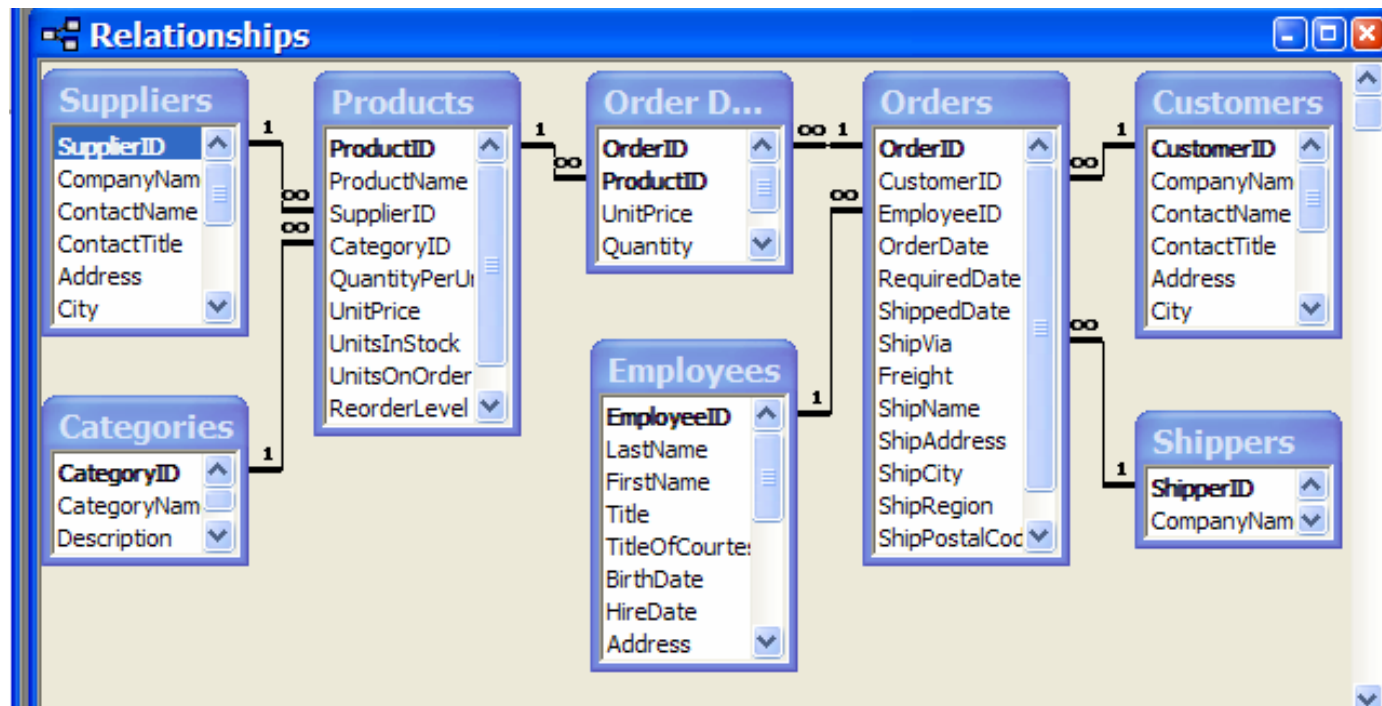
**Categories**

Picture: 

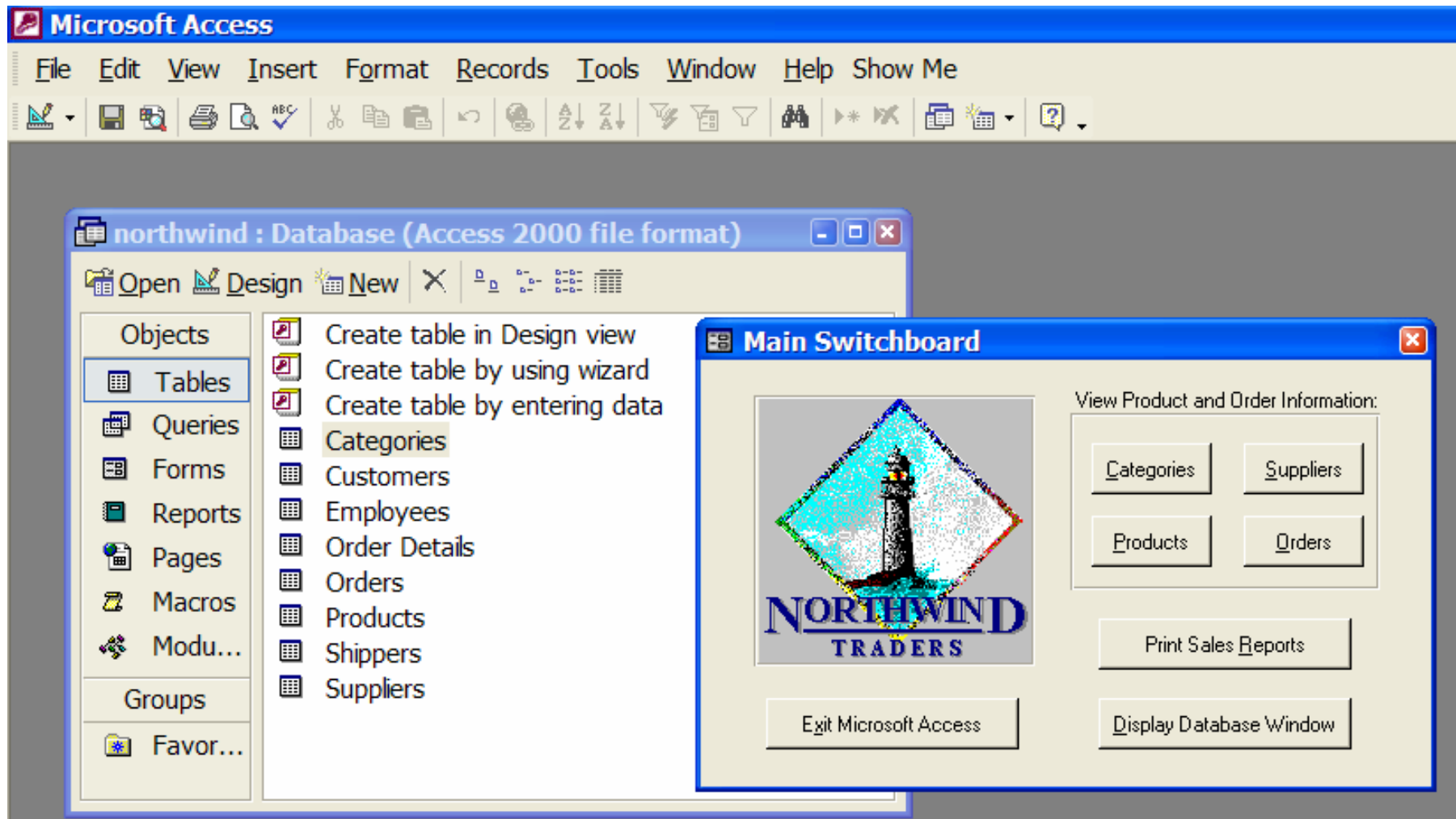
	Category ID	Category Name	Description	Picture
Product	1	Beverages	Soft drinks, coffees, teas, beers, and ales	Bitmap Image
Quantity	2	Condiments	Sweet and savory sauces, relishes, spreads, and seasonings	Bitmap Image
Product	3	Confections	Desserts, candies, and sweet breads	Bitmap Image
Quantity	4	Dairy Products	Cheeses	Bitmap Image
Product	5	Grains/Cereals	Breads, crackers, pasta, and cereal	Bitmap Image
Quantity	6	Meat/Poultry	Prepared meats	Bitmap Image
Product	7	Produce	Dried fruit and bean curd	Bitmap Image
Quantity	8	Seafood	Seaweed and fish	Bitmap Image
*	(AutoNumber)			

# MS Access - Relationships

To integrate data and provide required information



# MS Access - Menu





# Sample Report



Alphabetical List of Products - Microsoft Internet Explorer - [Working Offline]

File Edit View Favorites Tools Help

Back Forward Stop Reload Home Search Favorites Media Print Mail

Address C:\Documents and Settings\gihanw\My Documents\Products.htm Go Links

### Alphabetical List of Products

14-Apr-05

**A**

Product Name:	Category Name:	Quantity Per Unit:	Units In Stock:
Aniseed Syrup	Condiments	12 - 550 ml bottles	13

**B**

Product Name:	Category Name:	Quantity Per Unit:	Units In Stock:
Boston Crab Meat	Seafood	24 - 4 oz tins	123

**C**

Product Name:	Category Name:	Quantity Per Unit:	Units In Stock:
Camembert Pierrot	Dairy Products	15 - 300 g rounds	19
Carnarvon Tigers	Seafood	16 kg pkg.	42
Chai	Beverages	10 boxes x 20 bags	39
Chang	Beverages	24 - 12 oz bottles	17
Chartreuse verte	Beverages	750 cc per bottle	69
Chef Anton's Cajun Seasoning	Condiments	48 - 6 oz jars	53
Chocolade	Confections	10 pkgs.	15
Côte de Blaye	Beverages	12 - 75 cl bottles	17

**E**

Product Name:	Category Name:	Quantity Per Unit:	Units In Stock:
Escargots de Bourgogne	Seafood	24 pieces	62

**F**

Product Name:	Category Name:	Quantity Per Unit:	Units In Stock:
Filo Mix	Grains/Cereals	16 - 2 kg boxes	38
Flotemysost	Dairy Products	10 - 500 g pkgs.	26

Page 1 of 5

[First](#) [Previous](#) [Next](#) [Last](#)

Done My Computer